

# CELEBRATE INSPIRATION

Selected works by

John Alexander	Robert Harms	Olivia Munroe
Jennifer Bartlett	Sue Heatley	Harold Reddicliffe
Mary Ellen Bartley	Chuck Holtzman	Clifford Ross
Adam Bartos	Sharon Horvath	Toni Ross
Varujan Boghosian	John Iversen	Raja Ram Sharma
Linda Etcoff	Robert Jakob	Alan Shields
Caio Fonseca	Mel Kendrick	Donald Sultan
Christopher French	Laurie Lambrecht	Timothy Woodman
Carol Gove	Diane Mayo	Jack Youngerman

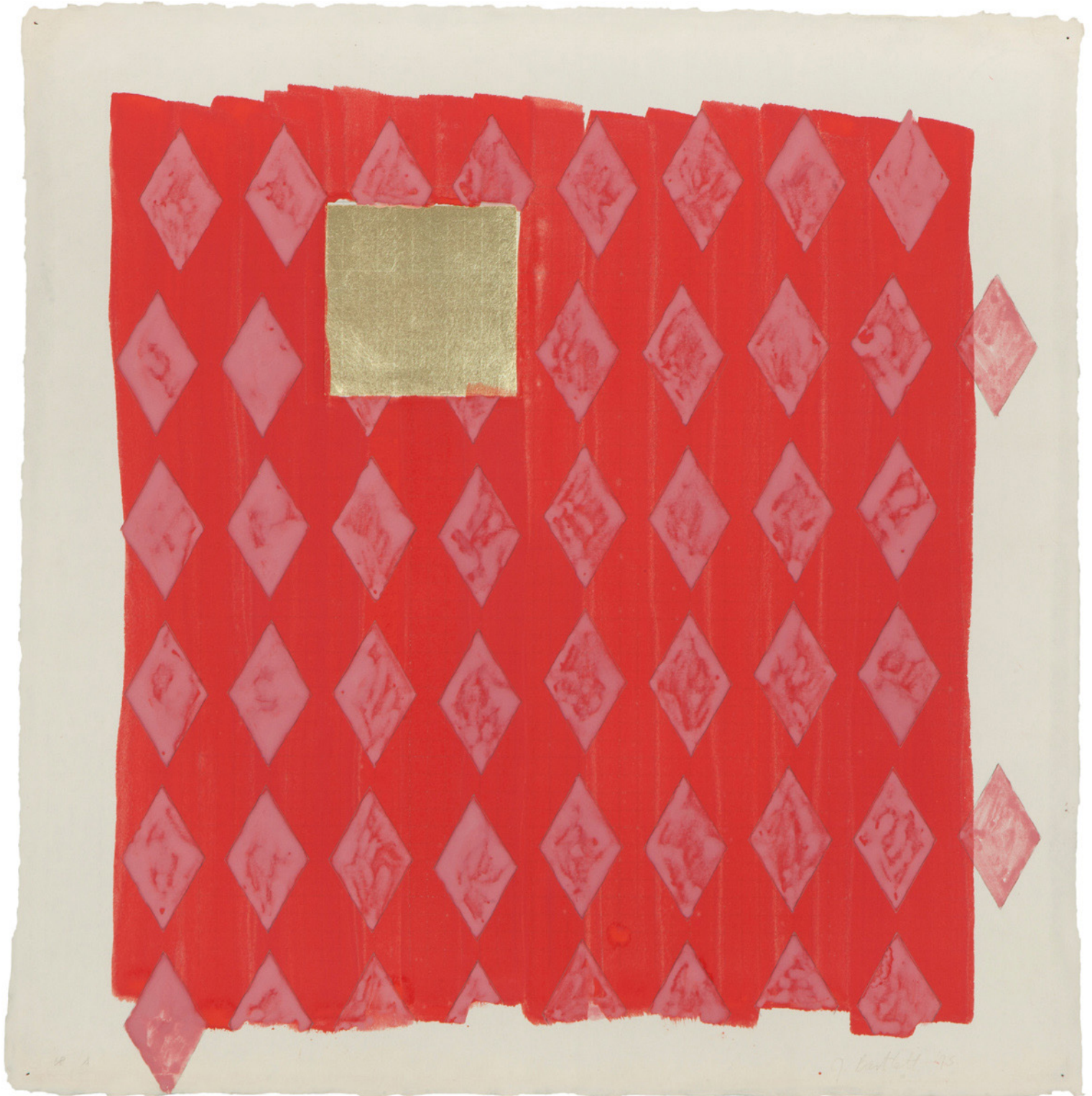
## THE DRAWING ROOM

66 NEWTOWN LANE EAST HAMPTON NY 11937

T 631 324.5016 [www.drawingroom-gallery.com](http://www.drawingroom-gallery.com)



John Alexander, *Pintail Head*, 2001, watercolor on paper, 8 5/8 x 6 inches, \$6,000



Jennifer Bartlett, *Homan-ji 68A*, 1995, Japanese mineral color with blue gold leaf  
over silkscreen grid on handmade Kozo paper, 24 x 24 inches, \$18,400



Mary Ellen Bartley, *Untitled #40 (Paperbacks)*, 2009, archival pigment print on Hahnemuhle rag paper, 12 x 18 inches, \$2,600



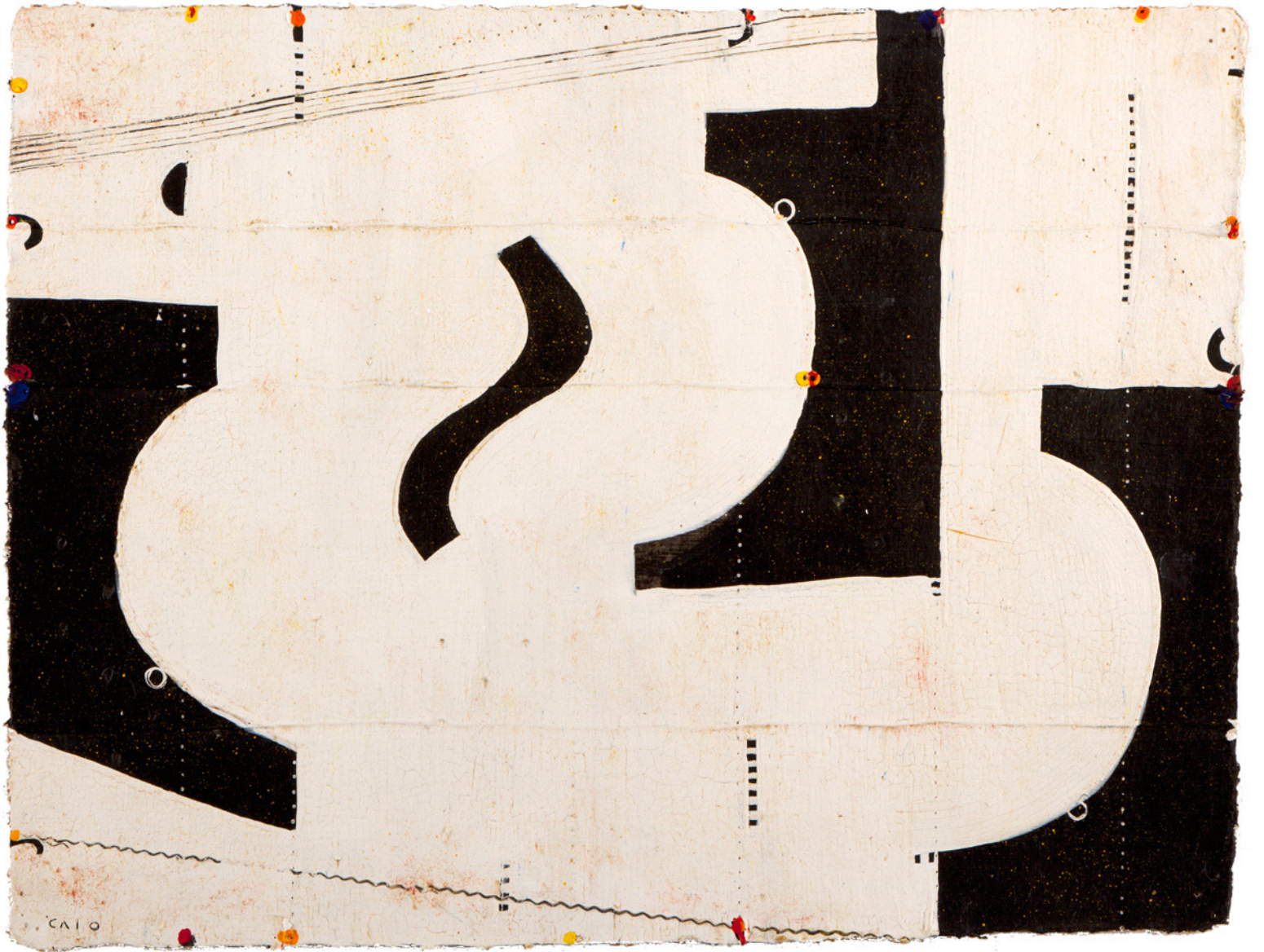
Adam Bartos, C936-6, 2009, archival pigment print, edition of 4, 24 x 16 1/4 inches, \$4,250



Varujan Boghosian, *Tahiti*, 2010, collage, 16 x 20 1/2 inches, \$8,000

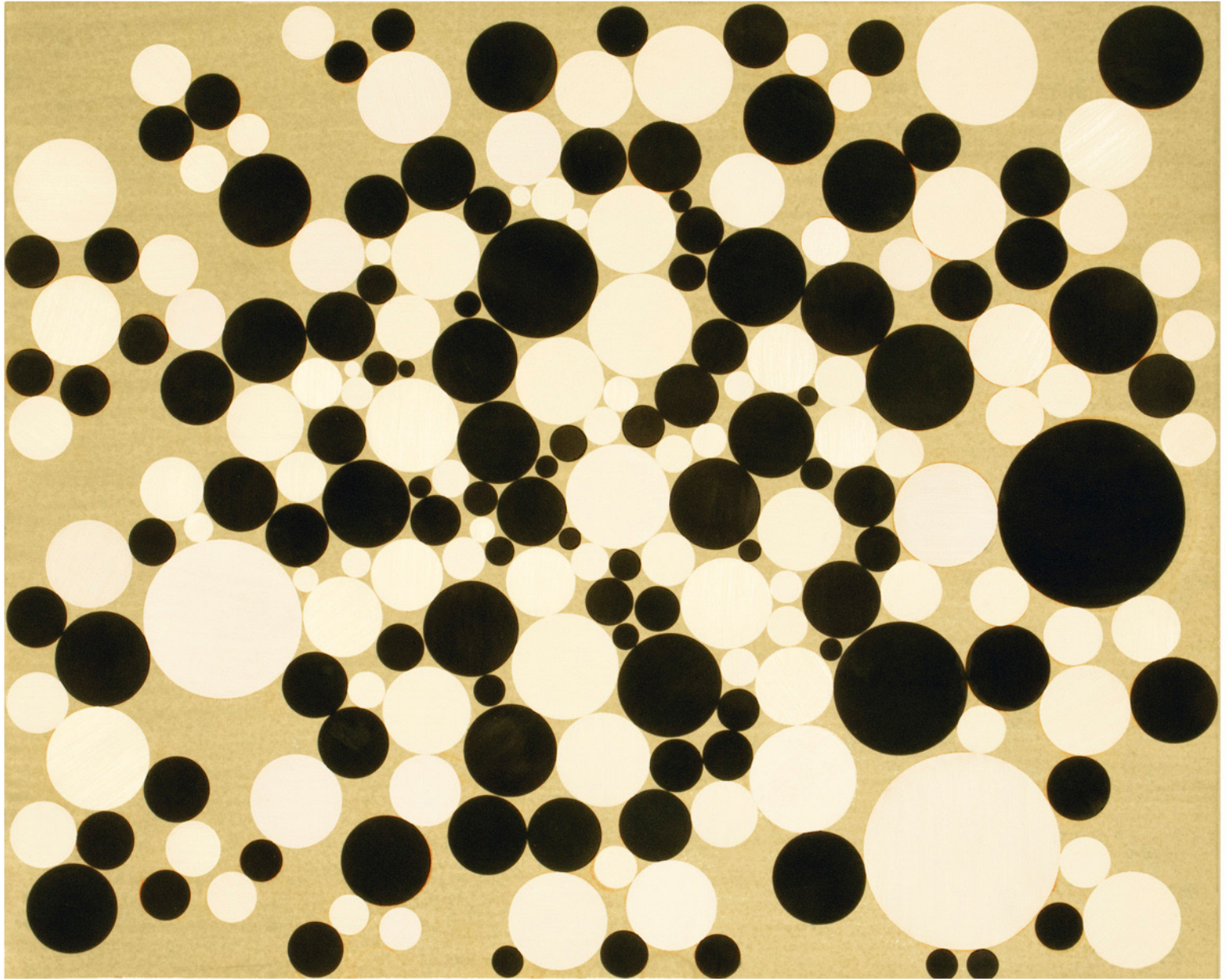


Linda Etkoff, *Blue Hyacinth*, 2012, charcoal, pastel and crayon on paper,  
20 3/8 x 14 1/2 inches, \$4,200



Caio Fonseca, *Pietrasanta (P10.7)*, 2010, gouache on paper, 12 x 16 inches, \$14,000





Christopher French, *Touchy-feely*, 2011, oil, watercolor, pencil and acrylic on paper, 14 1/2 x 18 inches, \$2,400



Carol Gove, *Abundance*, 2012, mixed media collage on panel, 24 x 20 inches, \$5,000



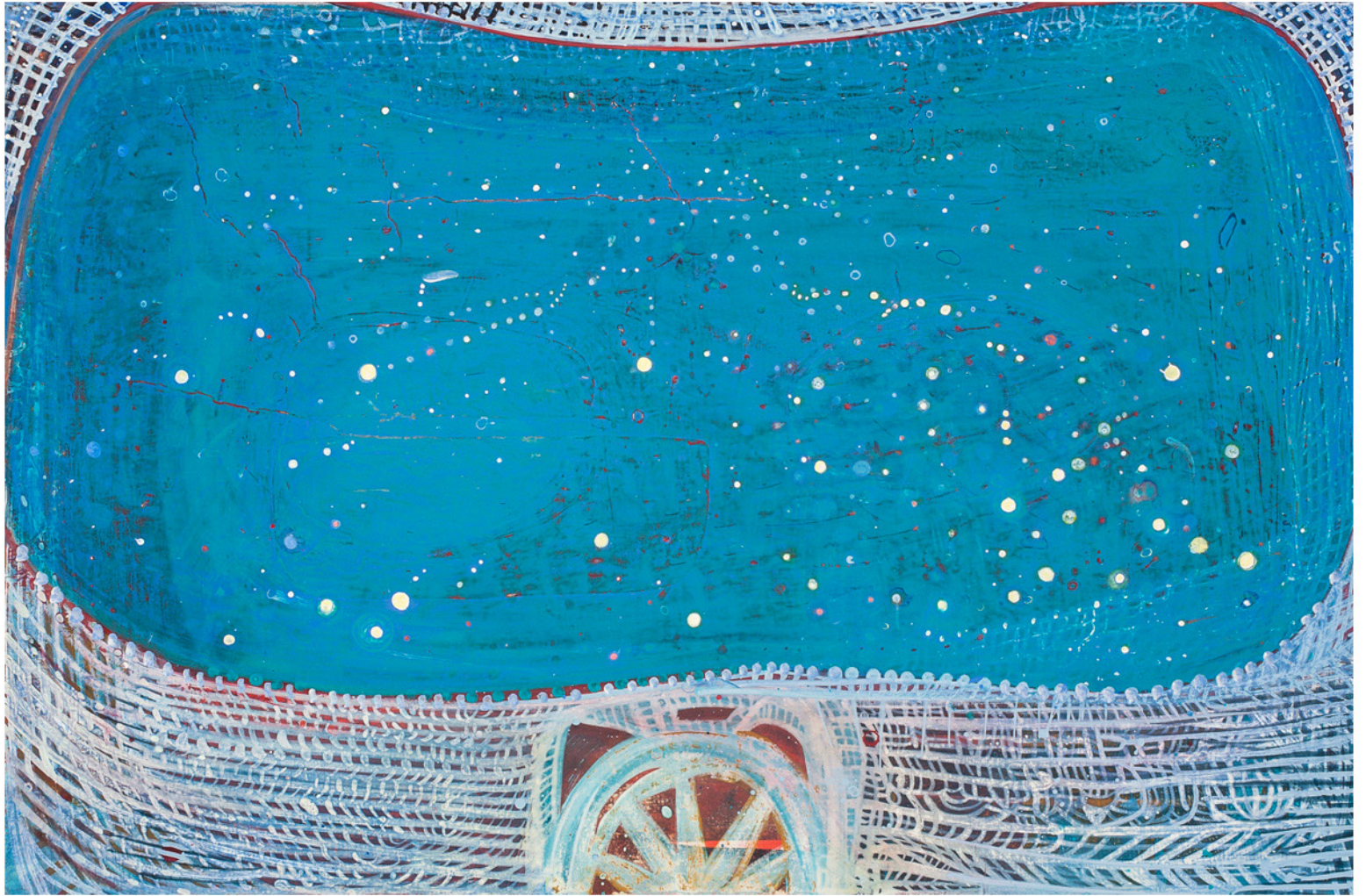
Robert Harms, *Snow Reflection*, 2011, oil on canvas, 20 x 16 inches, \$2,600



Sue Heatley, *Black Garden, Orange Orbs, Silver Comb*, 2012, relief print on Sekishu paper  
edition of 10, 18 1/4 x 17 1/2 inches, \$1,050



Chuck Holtzman, *Untitled* (#805), 2009, ink, colored pencil and gouache on paper  
16 1/4 x 12 1/8 inches, \$3,400



Sharon Horvath, *Blueberry Boat*, 2012, pigment, ink and polymer on paper mounted on canvas, 24 x 36 inches, \$8,500



John Iversen, *Double Jacks*, 2011, 18kt yellow gold, oxidized sterling silver  
Botswana agate, natural carnelian, black Akoya pearl and diamond bead, 3/4 x 1 1/3 x 3/4 inches, \$7,600

John Iversen, *Double Oval Hammered Chain*, 2011, sterling silver, 19 inches, \$4,800



Robert Jakob, *Garden Notes, trumpet vine #6*, 2011, ink, acrylic on paper, 28 x 19 5/8 inches, \$3,400





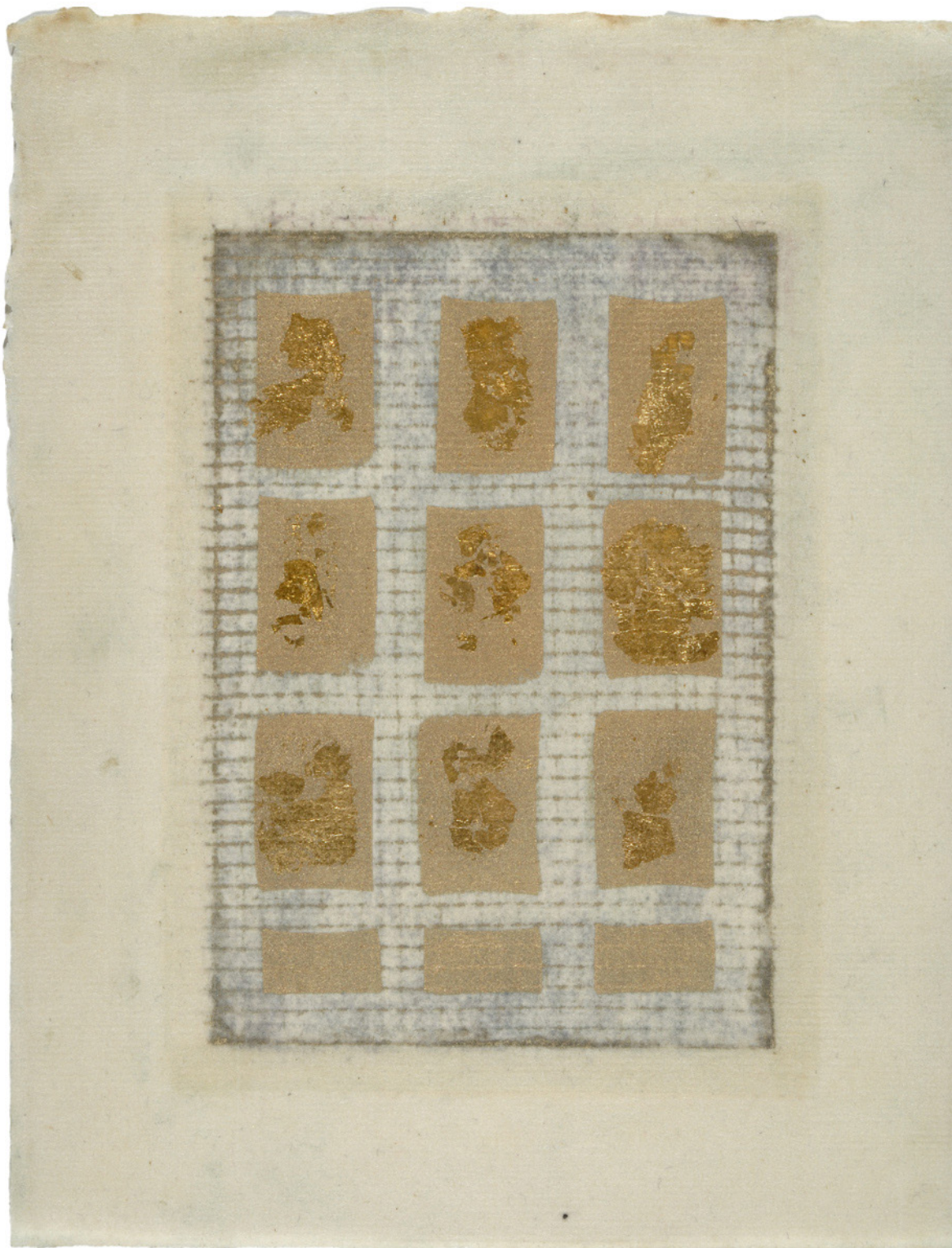
Mel Kendrick, *Untitled*, 2010, wood and Japan color, 9 1/2 x 4 x 4 inches, \$7,500



Laurie Lambrecht, *Compositions with Triangle*, 1991, archival pigment print, 24 x 24 inches, \$4,000



Diane Mayo, *The Cypriot Series (11)*, 2012, ceramic, 23 3/4 x 10 1/2 x 5 1/2 inches, \$2,800



Olivia Munroe, *Untitled*, 2012, ink, bronze powder and wax on laid paper  
9 3/4 x 7 5/8 inches, \$625



Harold Reddicliffe, *Argus*, 2003, oil on canvas, 21 x 14 inches, \$6,000



Clifford Ross, *Gate II*, 2008, archival pigment print on Japanese paper, 15 1/16 x 13 inches, **\$5,000**



Toni Ross, *11.1048*, 2011, brushed black slip stoneware, 23 1/2 x 9 x 9 inches, \$3,800



Raja Ram Sharma, *Study V*, 2011, hand ground mineral pigments with gum arabic on paper, 6 1/8 x 8 1/4 inches, \$3,200

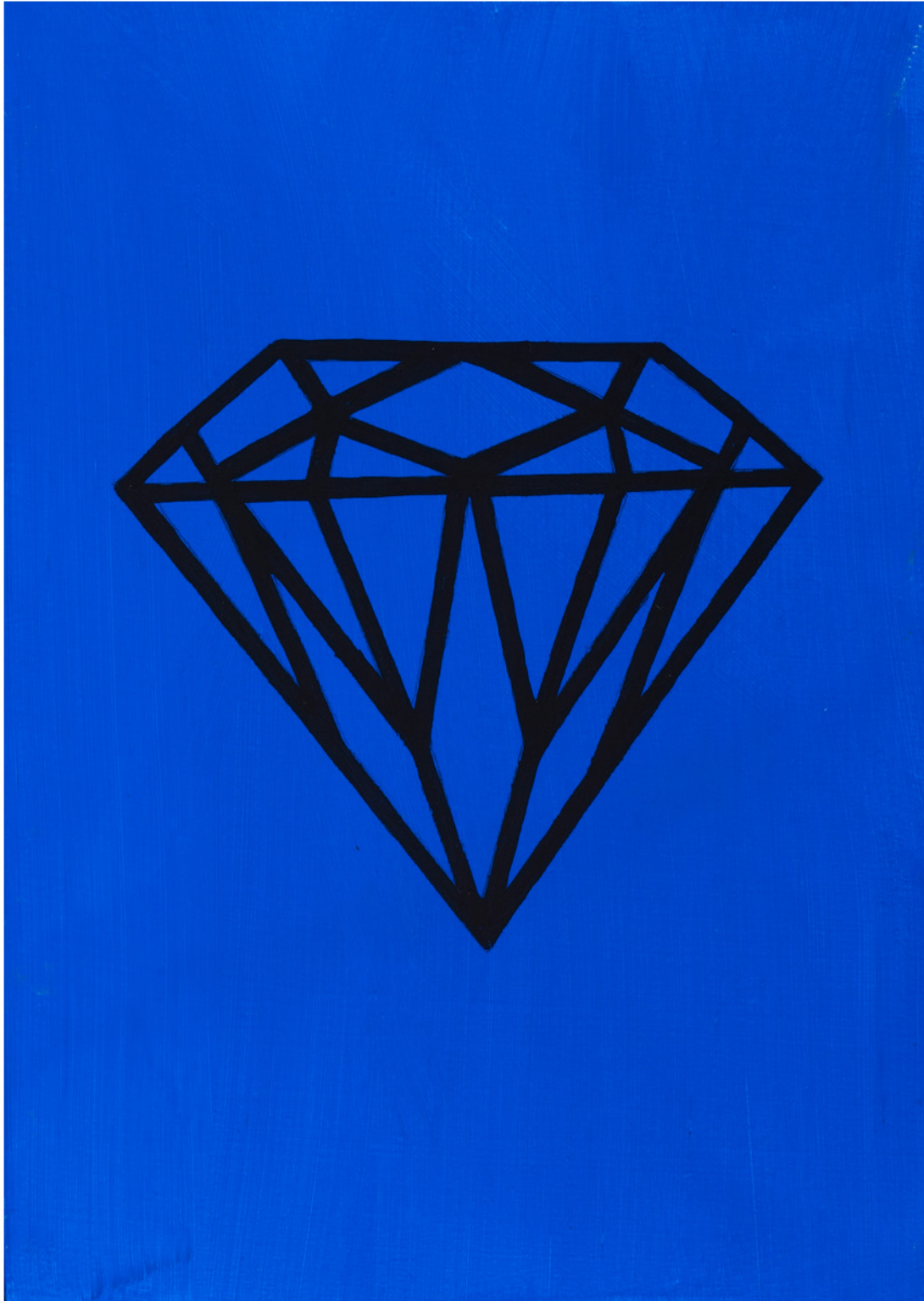




Alan Shields (1944-2005), *Scaba-Pro*, 1974, serigraph, relief, flocking and embossing on black silk content handmade paper by Lucine Folgueras, 13 x 13 inches, \$2,250



Donald Sultan, *Wallflowers April 30 2007*, gouache on paper, 15 1/4 x 12 3/4 inches, \$12,000



Timothy Woodman, *In Search of Lost Time* (2007-2009) #16.  
“...like a family jewel...” 1.p.232, oil on panel, 7 x 5 inches, \$600



Jack Youngerman, *Untitled Blue/Green*, 1959  
gouache on paper, 6 5/16 x 2 7/8 inches, \$4,000