

# Landscape & Still Life

August 25 – October 1, 2023

Jane Freilicher  
Saul Steinberg  
Albert York

Friday through Monday 11 – 5, and by appointment

THE DRAWING ROOM

55 MAIN STREET EAST HAMPTON NY 11937 T 631 324.5016

[www.drawingroom-gallery.com](http://www.drawingroom-gallery.com) [info@drawingroom-gallery.com](mailto:info@drawingroom-gallery.com)



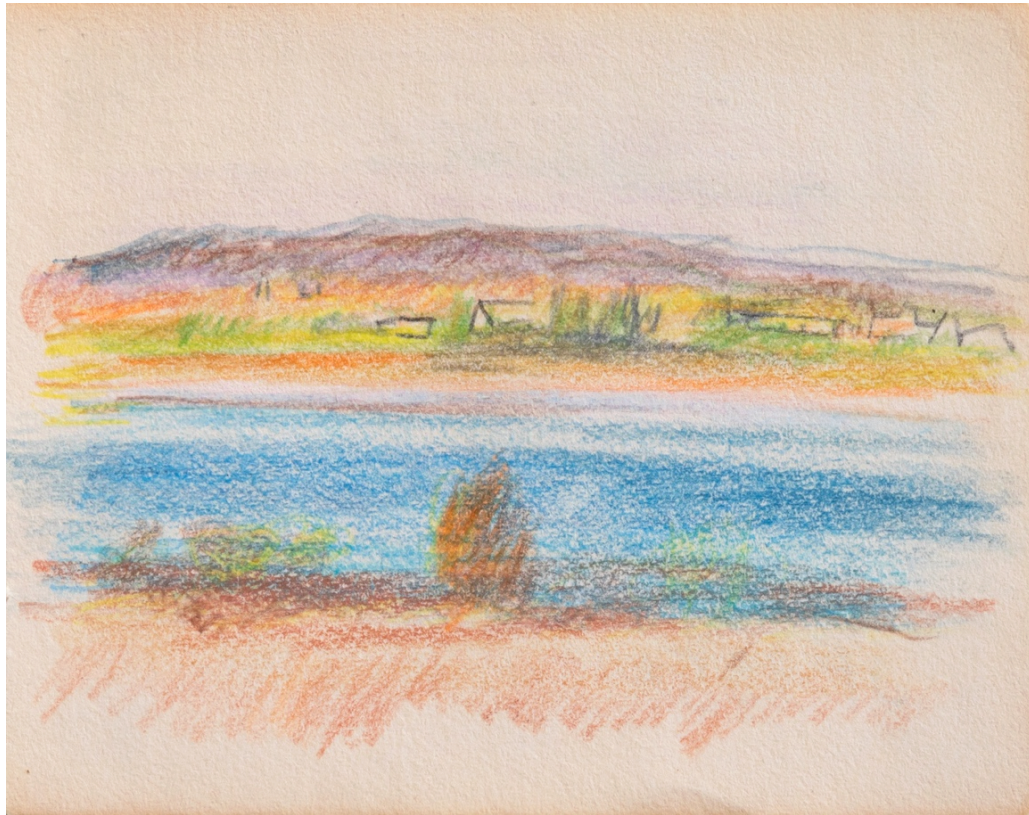
JANE FREILICHER

*Mecox Bay*, 1969, oil on canvas, 15 x 17 inches



JANE FREILICHER

Untitled, 1967, watercolor and crayon on paper, 24 1/2 x 19 1/2 inches



JANE FREILICHER

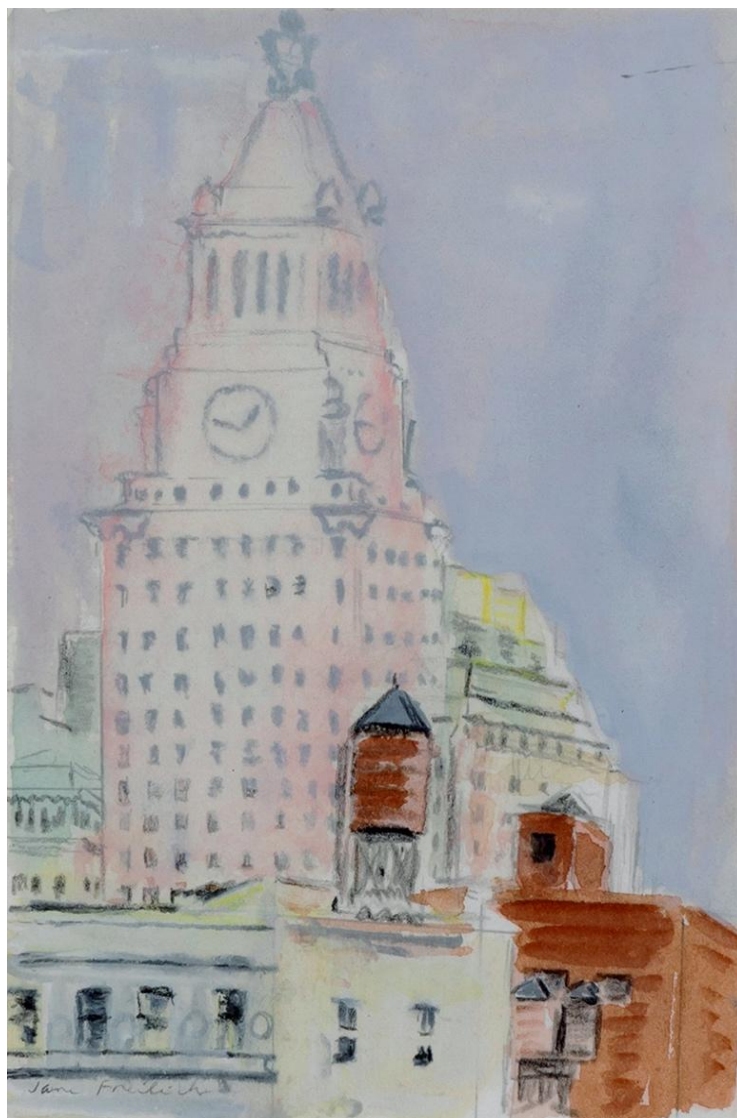
Untitled, c. 1980s, colored pencil on paper, 3 1/2 x 4 3/8 inches





JANE FREILICHER

*Sunset*, 1969-88, oil on canvas, 8 x 10 inches



JANE FRELICHER

1:47, 1978, watercolor on paper, 6 1/8 x 4 1/8 inches



ALBERT YORK

*Boats on River*, late 1950s - early 1960s, oil on panel, 9 x 11 7/8 inches





ALBERT YORK

*Field Flowers in Pot*, n.d., oil on panel, 15 x 12 5/8 inches







ALBERT YORK

*White Roses in Green Can*, 1968, oil on panel, 13 1/2 x 11 1/2 inches



ALBERT YORK

*Begonia Leaves in Glass Jar*, c. 1967, oil on panel, 10 1/2 x 8 inches





SAUL STEINBERG

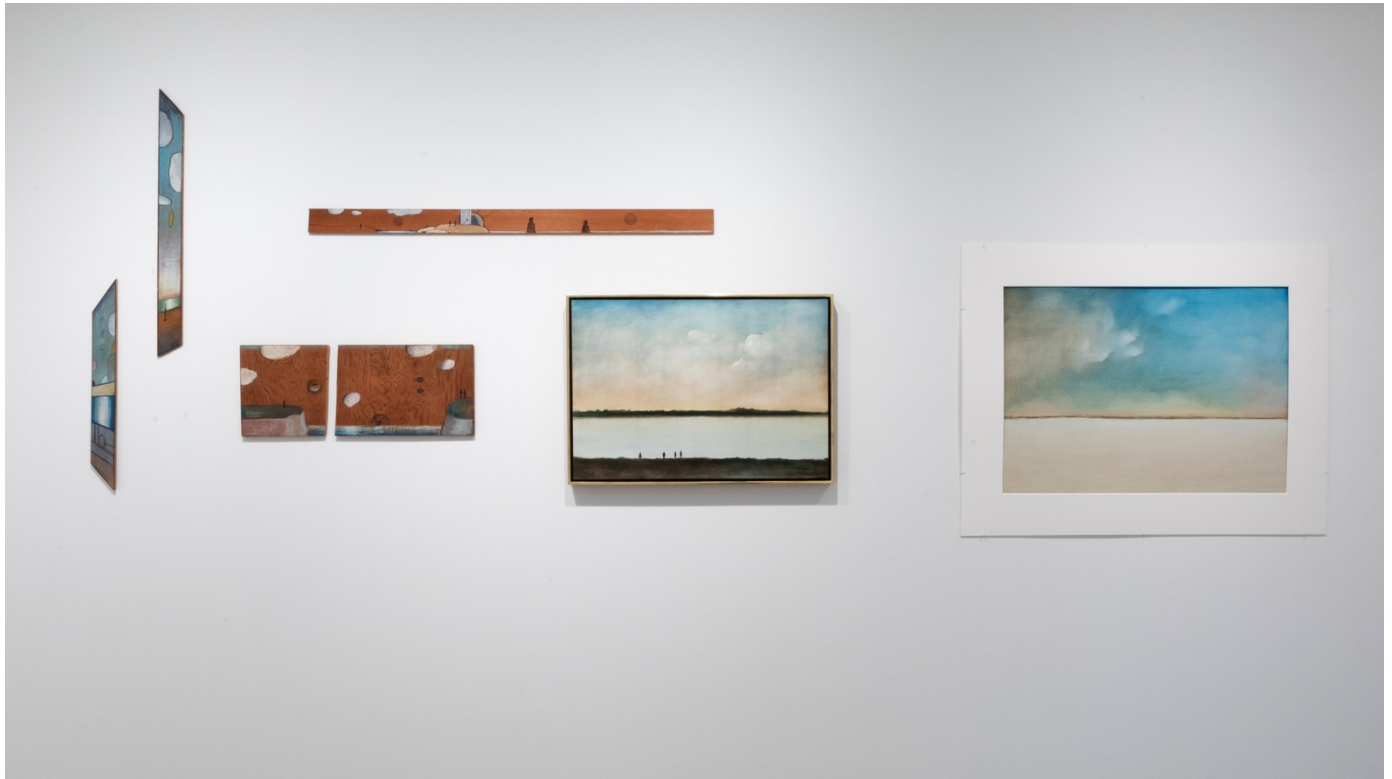
Untitled, 1970-80 (circa), oil and rubber stamp on canvas, 19 1/8 x 27 3/8 inches





SAUL STEINBERG

Untitled, c. 1970-1980, oil on unstretched canvas, with masking tape edging still at margins,  
26 1/4 x 40 1/2 inches





SAUL STEINBERG

Untitled, c. 1970-90, pastel, crayon, marker, rubber stamp and ink on wood, 9 5/8 x 9 1/4 x 1/2 inches





Untitled, 1979, watercolor on paper, 30 x 20 inches





SAUL STEINBERG

Untitled, 1968-71 (circa), colored pencil and crayon on wood panel, 22 1/4 x 2 5/8 x 1/4 inches



SAUL STEINBERG

Untitled, 1968 - 1971 (circa), crayon and colored pencil on wood panel, 23 x 2 3/4 x 1/4 inches



SAUL STEINBERG

Untitled, 1970-90 (circa), ink, rubber stamp and colored pencil on wood panel, 1 5/8 x 29 x 1/4 inches

Untitled, 1970-90 (circa), ink, rubber stamp and colored pencil on wood panel, 2 3/4 x 29 x 1/4 inches



SAUL STEINBERG

*Three Landscapes*, 1976, screen print in colors, lithograph, dry point on Dutch etching, 29 3/8 x 21 1/2 inches





SAUL STEINBERG

*Still Life*, 1975-85, pencil, colored pencil, crayon and pastel on wood panel, 12 x 17 1/8 x 3/4 inches