



ROBERT DASH | JANE FREILICHER | FAIRFIELD PORTER | JANE WILSON

ROBERT DASH
JANE FREILICHER
FAIRFIELD PORTER
JANE WILSON

perspectives on land, sea and sky

October 30 - December 7, 2015

THE DRAWING ROOM

66 NEWTOWN LANE EAST HAMPTON NY 11937

T 631 324.5016 www.drawingroom-gallery.com

Cover: Jane Freilicher, *Untitled (Mecox Bay)*, oil on board, 11 ¾ x 15 ⅝ inches



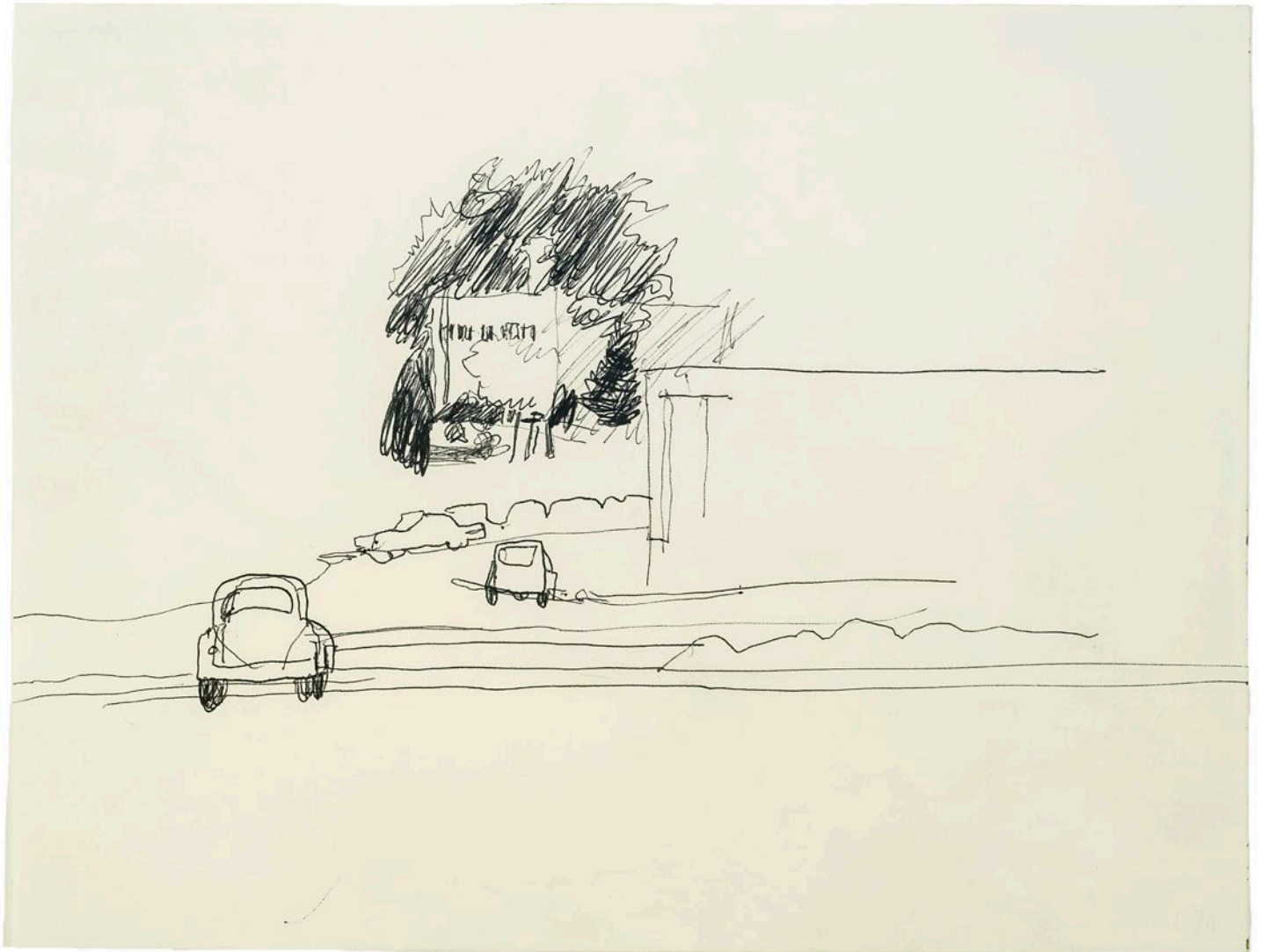
1. Jane Wilson, *View from Seven Ponds Bridge*, 1964, oil on linen, 22 ¼ x 28 inches



2. Fairfield Porter, [View from Hazan's, Water Mill, New York], c. 1972-73, ink on paper, 8 7/8 x 12 inches



3. Fairfield Porter, *East End Hardware, Southampton*, ink on paper, 9 x 11 ³/₄ inches



4. Fairfield Porter, *Study for "The Parking Lot"*, c. 1965, ink on paper, 9 x 11 $\frac{3}{4}$ inches



5. Robert Dash, *Untitled*, c. 1972, acrylic on canvas, 36 x 30 inches



6. Robert Dash, *Monday Morning (laundry)*, 1972, acrylic on canvas, 60 x 70 inches



7. Robert Dash, *Dull Spring II*, 1972, acrylic on canvas, 40 x 30 inches



8. Fairfield Porter, *View through Window from Interior*, c. 1965, ink on paper, 9 1/8 x 5 7/8 inches



9. Jane Wilson, *Branches*, 1963, oil on canvas, 35 x 40 inches



10. Jane Freilicher, *Through the Pines*, 1984, pastel on paper, 30 x 22 inches



11. Jane Freilicher, *Untitled (Landscape)*, oil on aluminum panel, 8 $\frac{3}{4}$ x 8 $\frac{3}{4}$ inches



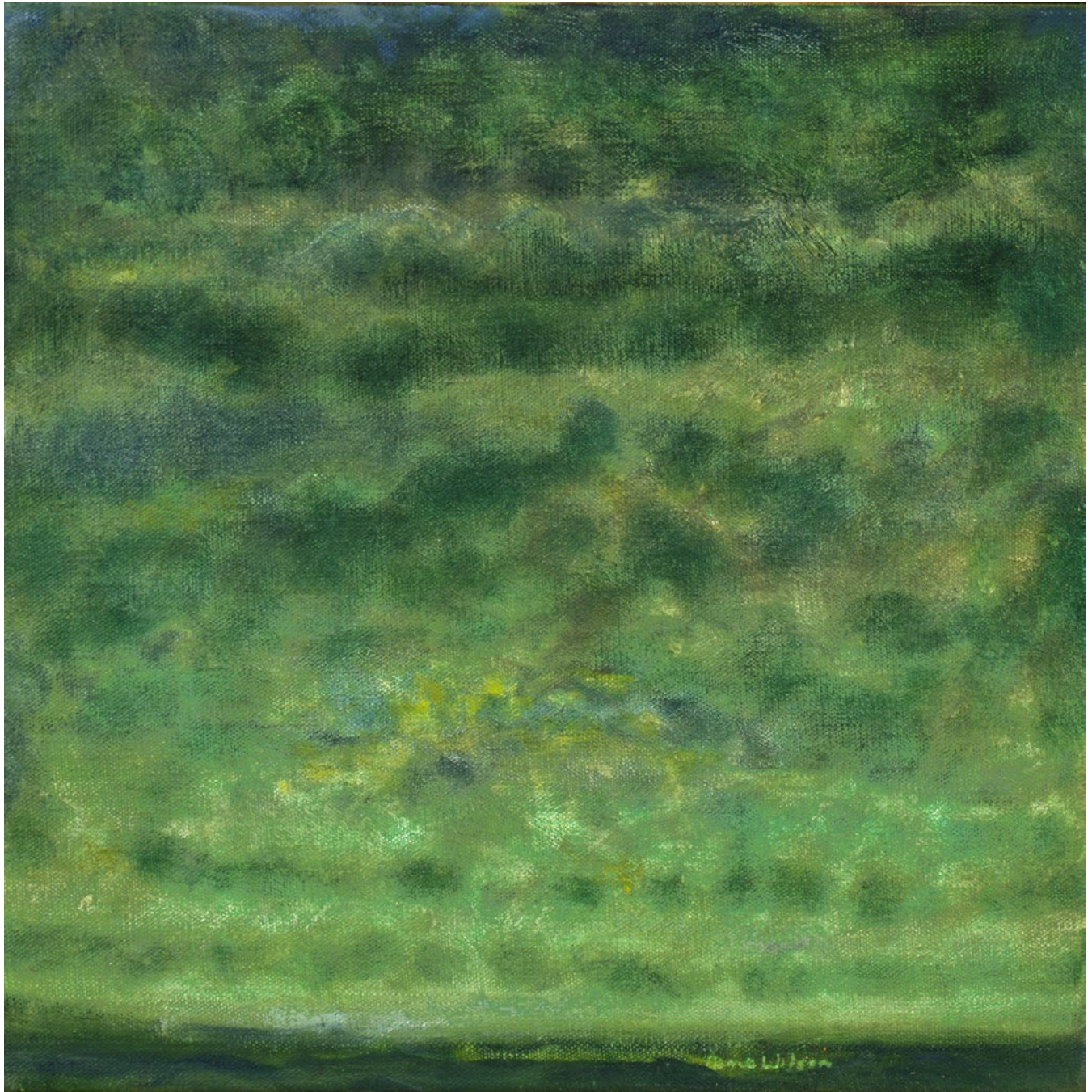
12. Robert Dash, *Sagg Road*, 1980, acrylic on canvas, 50 x 40 inches



13. Jane Wilson, *Remembered Day: Peconic*, 1995, oil on linen, 18 x 18 inches



14. Jane Wilson, *Haze at Dawn*, 1998, oil on linen, 18 x 18 inches



15. Jane Wilson, *Green Twilight*, 2001, oil on linen, 18 x 18 inches



16. Jane Freilicher, *Some Trees*, 2007, oil and paper mounted on board, 14 x 17 inches



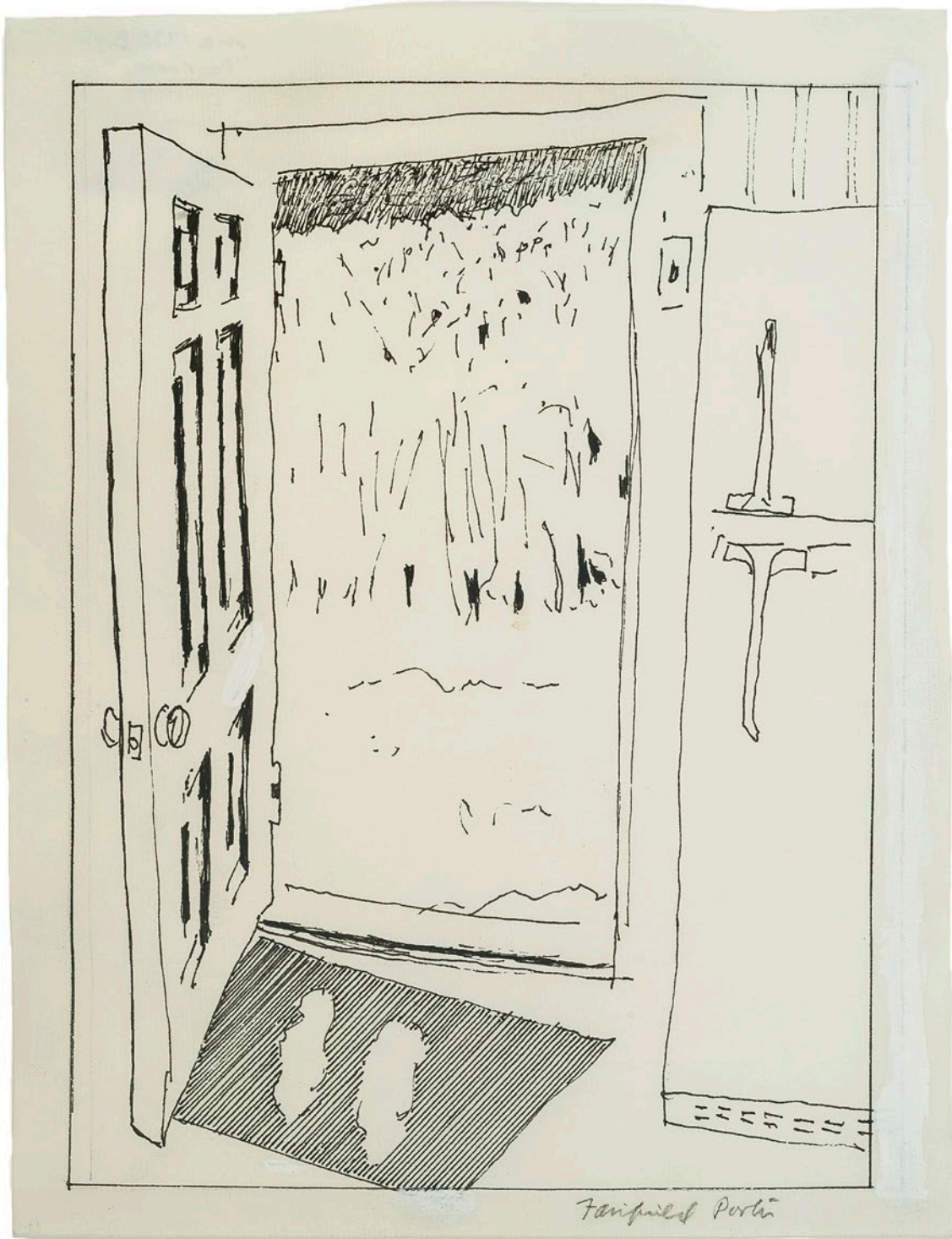
17. Fairfield Porter, *[Ocean]*, c. 1972-73, ink on paper, 8 x 11 inches



18. Jane Freilicher, *Pheasant Quill Landscape*, 1992, ink on paper, 8 x 10 inches



19. Fairfield Porter, *House Among Trees*, c. 1962, ink on paper, 11 ¼ x 11 inches



20. Fairfield Porter, *Doorway*, c. 1970, ink on paper, 11 $\frac{5}{8}$ x 9 inches