

THE DRAWING ROOM

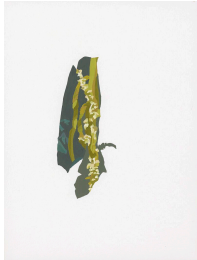
EMILY GOLDSTEIN & VICTORIA MUNROE

Artists in the Field

IRENE KOPELMAN | PAT PICKETT | ALEXIS ROCKMAN

May 13 - June 20, 2016

1



IRENE KOPELMAN
Forest Windows (114), 2012
gouache on paper
9 1/2 x 7 inches
(IK7949)

2



IRENE KOPELMAN
Forest Windows (119), 2012
gouache on paper
9 1/2 x 7 inches
(IK7953)

3



IRENE KOPELMAN
Forest Windows (110), 2012
gouache on paper
9 1/2 x 7 inches
(IK7955)

4



IRENE KOPELMAN
Forest Windows (116), 2012
gouache on paper
9 1/2 x 7 inches
(IK7951)

5



IRENE KOPELMAN
Forest Windows (111), 2012
gouache on paper
9 1/2 x 7 inches
(IK7947)

6



IRENE KOPELMAN
Forest Windows (118), 2012
gouache on paper
9 1/2 x 7 inches
(IK7952)

7



IRENE KOPELMAN
Forest Windows (115), 2012
gouache on paper
9 1/2 x 7 inches
(IK7950)

8



PAT PICKETT
American Elm - 3 hrs - winds west 6-10 mph - on Road to Brookfield Pond's "Floating Bridge", Vermont - Mon. Sept. 12, 2005
ink on photograph
18 1/2 x 13 inches
(PP4636)

9



PAT PICKETT

*Pine (Knobcone Pine) - Griffith Park - 1.5
hr - May 24, 2002*

ink on paper

10 1/4 x 7 1/2 inches

(PP1824)

10



PAT PICKETT

*Wild cherry - 2 hr - north wind Jamesport in
August 2004*

ink on paper

10 1/2 x 8 1/2 inches

(PP7968)

11



PAT PICKETT

*European Beech - 1/2 hr - on-shore breeze
- Ocean Rd. Bridgehampton, NY 2004*

ink on paper

10 1/2 x 8 1/2 inches

(PP7966)

12



PAT PICKETT

*Sugar Pine - 1 hr - Light Breeze, occasional
Gust -*

Horse flats - San Gabriels - Aug 23, 2002

Ink on paper

10 1/4 x 7 1/2 inches

(PP1832)

13



PAT PICKETT

*Desert Palm - 3 hours - early afternoon
winds from the north 5-8 mph - in the Dos
Palmas oasis, on the San Andreas Fault,
between the Salton Sea and the Chocolate
Mts. (gunnery range) S. California Weds.
May 6, 2006*

ink on paper

22 1/2 x 15 inches

(PP3182)

14



PAT PICKETT

Limber Pine - Black Mountain (27 seconds, September 19, 2015), 2016

archival pigment print

7 1/4 x 8 5/8 inches

Ed. 1/5

(PP7973.1)

15



PAT PICKETT

Limber Pine - Boulder - Black Mountain II (14 seconds, May 8, 2011), 2016

archival pigment print

7 1/4 x 8 5/8 inches

Ed. 1/5

(PP7977.1)

16



PAT PICKETT

Oak and Pine - Black Mountain (10 seconds, October 4, 2009), 2016

archival pigment print

7 1/4 x 8 5/8 inches

Ed. 1/5

(PP7975.1)

17



PAT PICKETT

Sugar Pine - Windy Gap - San Gabriel Mountains (12 seconds, October 30, 2015), 2016

archival pigment print

7 1/4 x 8 5/8 inches

Ed. 1/5

(PP7981.1)

18



PAT PICKETT

Limber Pine - Boulder - Black Mountain I (5 seconds, October 4, 2009), 2016

archival pigment print

7 1/4 x 8 5/8 inches

Ed. 1/5

(PP7976.1)

19



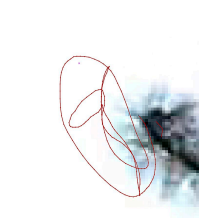
PAT PICKETT
Sugar Pine - Santa Susana Mountains (24 seconds, October 23, 2015), 2016
archival pigment print
7 1/4 x 8 5/8 inches
Ed. 1/5
(PP7974.1)

20



PAT PICKETT
Wild Rose - Jamesport (33 seconds, July 2010), 2010
archival pigment print
9 5/8 x 11 3/4 inches
(PP7980)

21



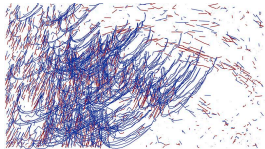
PAT PICKETT
Jeffrey Pine - Zen Road - Red (6 seconds, October 4, 2009), 2016
archival pigment print
11 x 8 1/4 inches
Ed. 1/5
(PP7978.1)

22



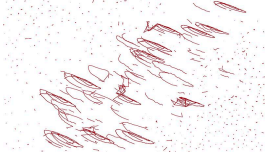
PAT PICKETT
Jeffrey Pine - Zen Road - Blue (6 seconds, October 4, 2009), 2016
archival pigment print
11 x 8 1/4 inches
Ed. 1/5
(PP7979.1)

23



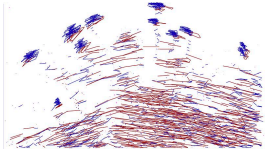
PAT PICKETT
Backyard Pomegranate - Los Angeles (13 seconds, June 2009), 2016
archival pigment print
9 1/4 x 16 1/8 inches
Ed. 1/1, AP 1
(PP7969.1)

24



PAT PICKETT
Limber Pine (detail) - Black Mountain II (27 seconds, September 19, 2015), 2016
archival pigment print
9 1/4 x 16 1/8 inches
Ed. 1/1, AP 1
(PP7970.1)

25



PAT PICKETT
Sagebrush - Wyoming (12 seconds, May 2013), 2016
archival pigment print
9 1/4 x 16 1/8 inches
Ed. 1/1, AP 1
(PP7971.1)

26



ALEXIS ROCKMAN
Lion's Mane Jellyfish (Cyanea capillata), 2014
sand and acrylic polymer on paper
24 x 18 inches
(AR7539)

27



ALEXIS ROCKMAN
Harbor Seal (Phoca vitulina), 2014
sand and acrylic polymer on paper
18 x 24 inches
(AR7615)

28



ALEXIS ROCKMAN
Irish Moss (Chondrus crispus), 2014
sand and acrylic polymer on paper
12 3/16 x 9 1/16 inches
(AR7536)

30



ALEXIS ROCKMAN
Black Sea Bass (Centropristis striata), 2014
sand and acrylic polymer on paper
12 3/16 x 16 1/8 inches
(AR7537)

31



ALEXIS ROCKMAN
Weakfish (Lynoscion regalis), 2010
sand and acrylic polymer on paper
12 x 16 inches
(AR7689)

32



ALEXIS ROCKMAN
Asian Tiger Mosquitoes (Aedes albopictus),
2014
soil, sand, organic material and acrylic
polymer on paper
16 x 12 inches
(AR7815)

33



ALEXIS ROCKMAN
Pied-Billed Grebe (Podilymbus podiceps),
2014
soil, sand, organic material and acrylic
polymer on paper
12 x 16 inches
(AR7833)

34



ALEXIS ROCKMAN
Tiger Salamander (Ambystoma tigrinum),
2014
soil, sand, organic material and acrylic
polymer on paper
9 x 12 inches
(AR7846)

35



ALEXIS ROCKMAN
Bullfrog (Rana catesbeiana), 2014
soil, sand, organic material and acrylic
polymer on paper
12 x 16 inches
(AR7843)

36



ALEXIS ROCKMAN
Eastern Box Turtle (Terrapene carolina), 2014
soil, sand, organic material and acrylic
polymer on paper
9 x 12 inches
(AR7845)

37



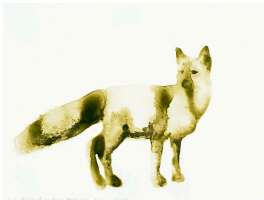
ALEXIS ROCKMAN
Least Bittern (Ixobrychus exilis), 2014
soil, sand, organic material and acrylic
polymer on paper
12 x 16 inches
(AR7835)

38



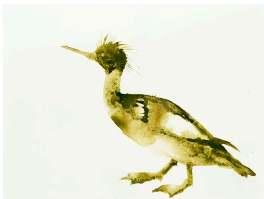
ALEXIS ROCKMAN
Leatherback Turtle (Dermochelys coriacea),
2014
soil, sand, organic material and acrylic
polymer on paper
18 x 24 inches
(AR7839)

39



ALEXIS ROCKMAN
Eastern Red Fox (Vulpes vulpes)
, 2014
organic material and acrylic polymer on
paper
12 3/16 x 16 1/8 inches
(AR7601)

40



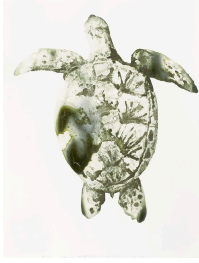
ALEXIS ROCKMAN
Red-Breasted Merganser (Mergus serrator),
2014
organic material and acrylic polymer on
paper
12 3/16 x 16 1/8 inches
(AR7595)

41



ALEXIS ROCKMAN
Piping Plover (Charadrius melodus), 2014
soil, sand, organic material and acrylic
polymer on paper
9 x 12 inches
(AR7808)

42



ALEXIS ROCKMAN
Green Sea Turtle (Chelonia mydas), 2014
sand and acrylic polymer on paper
24 x 18 inches
(AR7535)

43



ALEXIS ROCKMAN
Spanish Mackerel (Scomberomorus maculatus), 2014
sand and acrylic polymer on paper
9 1/6 x 12 3/16 inches
(AR7533)

44



ALEXIS ROCKMAN
Green Bean (Phaseolus vulgaris), 2014
soil, sand, organic material and acrylic polymer on paper
12 x 9 inches
(AR7820)

45



ALEXIS ROCKMAN
Eggplant (Solanum melongena), 2014
soil, sand, organic material and acrylic polymer on paper
12 x 9 inches
(AR7822)

office

46



ALEXIS ROCKMAN
Guinea fowl (Numididae), 2014
soil, sand, organic material and acrylic polymer on paper
12 x 9 inches
(AR7823)

47



PAT PICKETT

*Jeffrey Pine - 3 hours - Late afternoon winds
- 5-8 mph - Angeles Crest Highway (near
"Windy Gap") - San Gabriel Mts. -
elevation 7000' - S. California - Sat. May
13, 2006*

ink on paper
22 1/2 x 15 inches
(PP3186)

hallway

48



ALEXIS ROCKMAN

*Cottontail Rabbit (Sylvilagus floridanus),
2014*

soil, sand, organic material and acrylic
polymer on paper
20 x 14 inches
(AR7817)

alcove

49



PAT PICKETT

*Dwarf Mountain Mahogany - 2 hours -
Very hot winds from the NW - 8-10 mph
then fitful - near Smoke Tree Wash, Joshua
Tree National Park, S. California Thurs. May
11, 2006*

ink on paper
22 1/2 x 15 inches
(PP3185)

50



PAT PICKETT

*Sugar Pine - 1 hour. Santa Susana
Mountains, October 29, 2015*

ink on paper
13 x 10 inches
(PP7958)

51



PAT PICKETT

Creosote Bush - 1 hour - Late afternoon winds 10-15 mph - Banning Pass (wind farms) - Between Interstate 10 and the Union Pacific Line. Southern California - Mon. May 8, 2006, 2006

ink on paper
22 1/2 x 15 inches
(PP3184)

52



PAT PICKETT

Coyote Willow - 2 hrs - Lower Piney Creek. Banner, Wyoming May, 2013

ink on paper
12 x 9 inches
(PP7960)

window

53



PAT PICKETT

Southern California Black Walnut - 2 hrs - Santa Ana winds 12-15 mph, gusting to 20. Vasquez Rocks just off of the Pacific Crest Trail - Weds. Oct 5, 2005

ink on photograph
13 x 18 1/2 inches
(PP4655)

54



ALEXIS ROCKMAN

Laughing Gull (Leucophaeus atricilla), 2014
soil, sand, organic material and acrylic
polymer on paper

12 x 16 inches
(AR7812)

55



IRENE KOPELMAN

Forest Windows (113), 2012

gouache on paper
9 1/2 x 7 inches
(IK7954)

