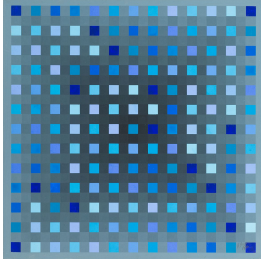


THE DRAWING ROOM

EMILY GOLDSTEIN & VICTORIA MUNROE

JOHN ALEXANDER, ANTONIO ASIS, JENNIFER BARTLETT, MARY ELLEN BARTLEY
CHUCK HOLTZMAN, MEL KENDRICK, DAN RIZZIE, ALAN SHIELDS

October 17 - December 7, 2014



ANTONIO ASIS

Labyrinthe à effets de profondeur, 1976

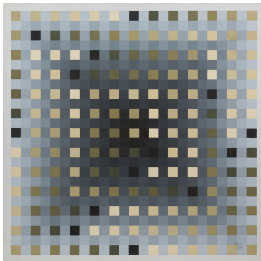
gouache on paperboard

15 3/4 x 15 3/4 inches

18 3/8 x 18 3/8 inches framed

signed and dated lower right

(AA6876)



ANTONIO ASIS

Labyrinthe à effets de profondeur, 1976

gouache on paperboard

15 3/4 x 15 3/4 inches

18 3/8 x 18 3/8 inches framed

signed and dated lower right

(AA6879)



DAN RIZZIE

Actors Colony #1, 2014

collage, colored pencil, handmade paper,

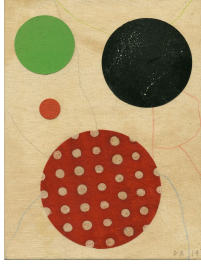
painted paper on canvas panel

8 x 6 inches

13 x 11 inches framed

signed and dated lower right

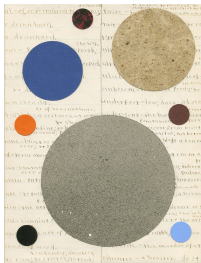
(DR7082)



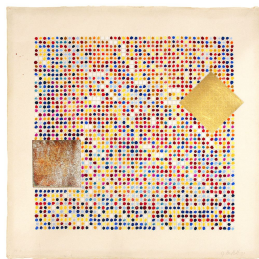
DAN RIZZIE
Actors Colony #4, 2014
collage, colored pencil, handmade paper,
painted paper on canvas panel
8 x 6 inches
13 x 11 inches framed
signed and dated lower right
(DR7085)



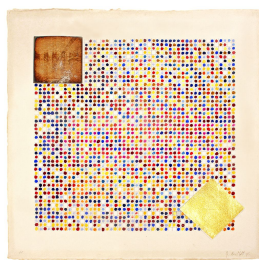
DAN RIZZIE
Actors Colony #2, 2014
collage, colored pencil, handmade paper,
painted paper on canvas panel
8 x 6 inches
13 x 11 inches framed
signed and dated lower right
(DR7083)



DAN RIZZIE
Actors Colony #3, 2014
collage, colored pencil, handmade paper,
painted paper on canvas panel
8 x 6 inches
13 x 11 inches framed
signed and dated lower right
(DR7084)



JENNIFER BARTLETT
Homan-ji III (1D), 1995
Japanese mineral color with blue gold leaf
on handmade Kozo paper
24 x 24 inches
27 1/4 x 26 1/2 inches framed
signed and dated lower right
(JB7079)



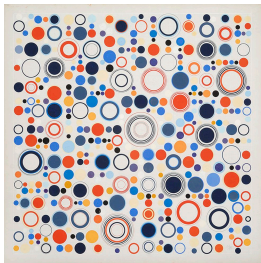
JENNIFER BARTLETT
Homan-ji III (17D), 1995
Japanese mineral color with blue gold leaf
on handmade Kozo paper
24 x 24 inches
27 1/4 x 16 1/2 inches framed
signed and dated lower right
(JB7080)



MEL KENDRICK
Untitled, 2007
wood and Japan color
33 3/8 x 12 1/8 x 12 3/4 inches
signed and dated on base
(MK5465)



MEL KENDRICK
Blue Crate, 2013
walnut with Japan color
11 1/2 x 8 x 8 inches
signed and dated on base
(MK7072)



ANTONIO ASIS
Geometría libre (4504), 1970
gouache on paper
30 5/16 x 29 7/8 inches
33 1/2 x 33 inches framed
signed and dated lower right
(AA6901)



ALAN SHIELDS (1944-2005)
Shape Up, 1976-77
acrylic, thread and beads on canvas belting
75 x 72 inches
signed verso
(AS4879)

office



ANTONIO ASIS
Cercles polychromes dans l'espace (3040), 1968
acrylic on masonite
17 3/4 x 17 3/4 inches
20 1/4 x 20 1/4 inches framed
signed and dated lower right
(AA6845)

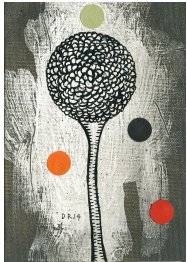


DAN RIZZIE
Lodi Garden #4, 2014
gesso, enamel and flashe on canvas panel
7 x 5 inches
13 x 11 inches framed
initialed and dated lower center
(DR7078)

hallway



DAN RIZZIE
Lodi Garden #3, 2014
gesso, enamel and flashe on canvas panel
with button
7 x 5 inches
13 x 11 inches framed
initialed and dated lower center
(DR7077)

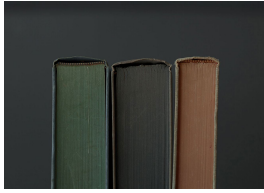


DAN RIZZIE
Lodi Garden #2, 2014
gesso, enamel and flashe on canvas panel
7 x 5 inches
13 x 11 inches framed
initialed and dated lower center
(DR7076)

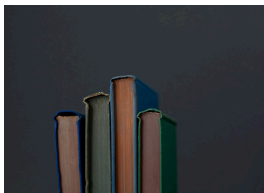


DAN RIZZIE
Lodi Garden #1, 2014
gesso, enamel and flashe on canvas panel
7 x 5 inches
13 x 11 inches framed
initialed and dated lower center
(DR7075)

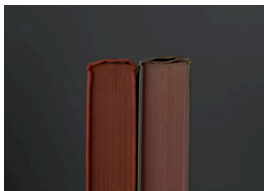
alcove



MARY ELLEN BARTLEY
November Three (Reading November),
2013
archival pigment print on Hahnemuhle rag
paper
12 x 18 inches
17 1/2 x 22 5/8 inches framed
Edition 1/7
signed and numbered on label verso
(MB7081.1)



MARY ELLEN BARTLEY
November Four (Reading November), 2013
archival pigment print on Hahnemuhle rag
paper
13 x 18 inches
17 1/2 x 22 5/8 inches framed
Edition 1/7
signed and numbered on label verso
(MB7088.1)



MARY ELLEN BARTLEY
November Two Red (Reading November),
2013
archival pigment print on Hahnemuhle rag
paper
13 x 18 inches
17 1/2 x 22 5/8 inches framed
Edition 1/7
signed and numbered on label verso
(MB7087.1)



JOHN ALEXANDER
Two Sardines, 2013
oil on canvas
10 x 8 inches
11 1/2 x 9 3/4 inches framed
signed and dated verso
(JA7069)



JOHN ALEXANDER
Lobster Claw, 2013
oil on canvas
10 x 8 inches
11 1/2 x 9 3/4 inches framed
signed and dated verso
(JA7070)



JOHN ALEXANDER
Oyster, 2013
oil on canvas
10 x 8 inches
11 1/2 x 9 3/4 inches framed
signed and dated verso
(JA7071)

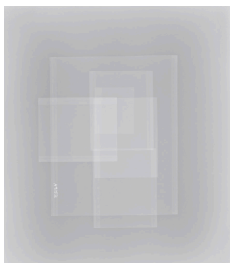
back gallery



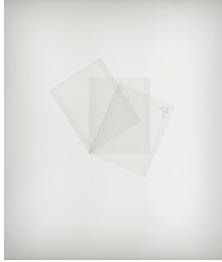
CHUCK HOLTZMAN
Untitled, 1990
acrylic and plywood on plywood
13 1/2 x 13 3/16 inches
signed verso
(CH7066)



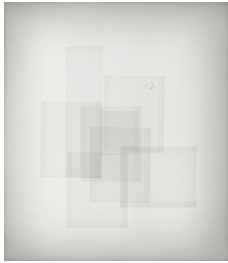
CHUCK HOLTZMAN
Untitled, 1990
acrylic and plywood on plywood
14 x 12 5/8 inches
signed verso
(CH7067)



MARY ELLEN BARTLEY
A9152 Inverted, 2014
archival pigment print on Hahnemuhle rag
paper
17 1/4 x 15 inches
19 1/2 x 17 1/4 inches framed
Edition 1/7
signed, dated and numbered verso
(MB6993.1)



MARY ELLEN BARTLEY
Plus Three Quarters, 2014
archival pigment print on Hahnemuhle rag
paper
17 1/4 x 15 inches
19 1/2 x 17 1/4 inches framed
Edition 2/7
signed, dated and numbered verso
(MB6994.2)



MARY ELLEN BARTLEY
Plus Two Stops, 2014
archival pigment print on Hahnemuhle rag
paper
17 1/4 x 15 inches
19 1/2 x 17 1/4 inches framed
Edition 2/7
signed, dated, numbered verso
(MB7051.2)



CHUCK HOLTZMAN
#864, 2012
ink on paper
65 x 39 1/2 inches
70 3/16 x 44 3/4 inches framed
initialed and dated lower right
(CH5785)



MEL KENDRICK
Untitled, 2012
wood and Japan color
13 1/2 x 5 x 4 1/2 inches
signed and dated on base
(MK6291)

window



MEL KENDRICK
Five Point Red Block, 2012
wood and Japan color
13 1/4 x 6 x 6 1/2 inches
signed on base
(MK6487)



ANTONIO ASIS
Geometría libre (4503), 1968
gouache on paper
30 5/16 x 29 7/8 inches
33 1/2 x 33 inches framed
signed and dated lower right
(AA6897)