

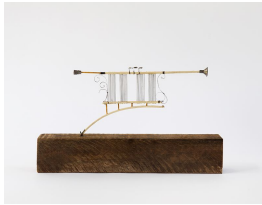
# THE DRAWING ROOM

EMILY GOLDSTEIN & VICTORIA MUNROE

ADRIAN NIVOLA

sculpture

July 29 - August 29, 2016



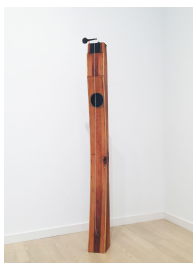
ADRIAN NIVOLA  
*White Russian Trumpet*, 2016  
wire, wood, metal, enamel  
10 x 5 x 3/4 inches  
(AN8135)



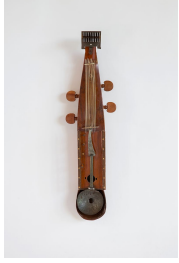
ADRIAN NIVOLA  
*The Rise of the Blues*, 2016  
steel, wood, sandpaper, cotton, wire  
10 1/2 x 18 3/8 x 8 3/8 inches  
(AN8107)



ADRIAN NIVOLA  
*Serenade for Queen Hatshepsut*, 2016  
wood, horse hair, wire, brass, enamel, steel  
11 1/2 x 16 x 3 inches  
(AN8106)



ADRIAN NIVOLA  
*Bottesini's Bass*, 2016  
wood, wire, metal, enamel  
55 x 4 5/8 x 4 inches  
(AN8137)



ADRIAN NIVOLA  
*For Vrunda's Wedding Dance*, 2016  
wood, wire, steel, enamel  
22 x 3 x 4 1/2 inches  
(AN8109)



ADRIAN NIVOLA  
*Gaelic Harp*, 2016  
wood, wire, enamel, brass  
9 1/4 x 12 1/8 x 5 (dimensions with base)  
(AN8080)



ADRIAN NIVOLA  
*The Devil's Trill*, 2016  
wood, wire, enamel  
3 1/2 x 16 1/4 x 3 1/2 inches  
(AN8126)



ADRIAN NIVOLA  
*Player from Pompeii*, 2016  
wood, copper, enamel, wire, paper  
23 x 4 x 4 3/4 inches  
(AN8128)



ADRIAN NIVOLA  
*Ragtime Totem*, 2016  
wire, wood, enamel, steel, watch parts, felt,  
brass  
13 1/2 x 1 3/4 x 1 3/4 inches  
(AN8115)



ADRIAN NIVOLA  
*Nocturne for My Father*, 2016  
wood, wire, brass, enamel  
7 1/2 x 13 3/4 x 5 1/2 inches  
(AN8083)



ADRIAN NIVOLA  
*Pharoah's Harp*, 2016  
wood, wire  
9 1/2 x 9 x 3 1/2 inches (dimensions  
include base)  
(AN8081)



ADRIAN NIVOLA  
*Eliza's Sonata*, 2016  
wood, wire, metal  
12 1/4 x 13 x 3 inches  
(AN8133)



ADRIAN NIVOLA  
*For a Spanish Troubadour*, 2016  
wood, wire, paper, enamel, brass, watch  
parts  
18 x 4 1/2 x 3 inches  
(AN8108)



ADRIAN NIVOLA  
*Hokusai's Bridge*, 2016  
wood, wire, metal, enamel  
4 1/2 x 23 x 3 1/2 inches  
(AN8129)



ADRIAN NIVOLA  
*Deco Pochette #4*, 2015  
wood, wire and paint  
17 x 2 x 2 1/2 inches  
(AN7762)



ADRIAN NIVOLA  
*Swanson's Pochette*, 2016  
wood, wire, enamel  
13 x 1 1/2 x 1 inches  
(AN8127)



ADRIAN NIVOLA  
*Resurrecting a Pochette*, 2016  
wood, wire  
1 3/8 x 14 x 2 inches  
(AN8132)



ADRIAN NIVOLA  
*For Vuillard's Misia*, 2016  
wood, wire, paper, enamel  
2 x 12 1/2 x 1 3/4 inches  
(AN8131)



ADRIAN NIVOLA  
*After a Song*, 2016  
wood, wire, string, steel  
13 x 3 1/2 x 2 inches  
(AN8110)



ADRIAN NIVOLA  
*Phoenician Balladier*, 2016  
wood, wire, enamel, silver, brass  
7 1/2 x 18 1/8 x 6 inches  
(AN8112)



ADRIAN NIVOLA  
*Temple for a Guitar*, 2016  
wood, wire, enamel  
22 x 4 3/4 x 4 1/2 inches  
(AN8134)



ADRIAN NIVOLA  
*Minoan Guitar*, 2016  
wood, brass, horse hair, wire, steel, enamel  
6 3/4 x 18 3/8 x 3 1/8 inches  
(AN8082)



ADRIAN NIVOLA  
*Gutbucket Tremolo*, 2016  
metal, steel, plastic, wood, enamel  
3 x 12 x 2 inches  
(AN8136)



ADRIAN NIVOLA  
*Snake Charmer*, 2016  
wood, metal, enamel  
12 x 2 1/5 x 1 inches  
(AN8130)



ADRIAN NIVOLA  
*The First Player*, 2016  
wood, steel, wire, player piano paper, tin, enamel  
3 1/4 x 16 x 3 1/2 inches  
(AN8079)



ADRIAN NIVOLA  
*Birth of a Violin*, 2016  
wood  
12 x 1 3/4 x 2 1/4 inches  
(AN8113)

alcove

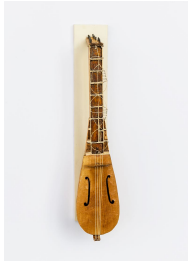


ADRIAN NIVOLA  
*Courting Flute*, 2016  
wood, feathers, brass, beads, wire, enamel  
3 1/4 x 11 1/8 x 1 inches  
(AN8114)

window



ADRIAN NIVOLA  
*Maquette for a Monument to Giuseppe  
Tartini*, 2016  
wood, wire, enamel, steel  
3 1/4 x 8 1/2 x 3 1/2 inches  
(AN8105)



ADRIAN NIVOLA  
*For Martiniano*, 2016  
wood, wire, enamel  
15 x 2 1/2 x 4 1/2 inches  
(AN8120)



ADRIAN NIVOLA  
*Lucile*, 2016  
wood, wire, enamel, player piano paper,  
steel  
33 1/2 x 5 1/2 x 1 1/2 inches  
(AN8111)