

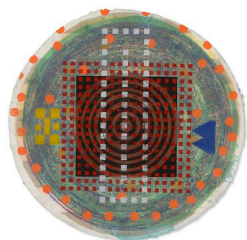
THE DRAWING ROOM

EMILY GOLDSTEIN & VICTORIA MUNROE

ALAN SHIELDS

Inventive Editions 1973 - 2001

June 7 - July 8, 2013



Alan Shields' Shield, 1974
relief, embossing, serigraph, die-cutting, stitching on carborundum and handmade paper by Upper U.S. Paper Mill

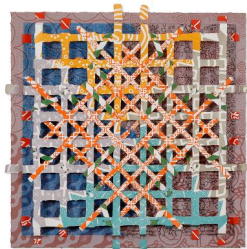
19 1/2 inches diameter

22 5/8 x 23 1/8 inches framed

edition 9/48

signed, dated and numbered lower center

AS6447



Ariel Island (from Pop Up Nature Series), 2001

etching and relief on handmade paper, assemblage

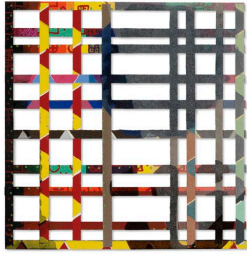
26 3/4 x 26 3/4 x 1 inches

31 1/4 x 31 inches framed

AP 2/3, edition of 13

signed, dated and numbered lower center

AS6464



Cocles, 1973
lithograph, serigraph, flocking, and
collage on die-cut Morilla AP Etch
(double sided)
14 1/4 x 14 1/4 inches
edition of 25
AS6441



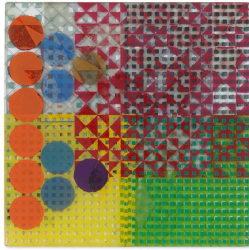
*Serious Repercussions (from the Deep
Inner-self Series)*, 1994
relief on handmade paper by Off Jones
Road with technical expertise of Joe
Wilfer
24 x 24 inches
27 3/8 x 27 3/8 inches
AP 3/7, edition of 17
signed and numbered verso
AS6462



*Will You Please Be Serious? (from the
Deep Inner-self Series)*, 1994
relief on handmade paper by Off Jones
Road with technical expertise of Joe
Wilfer
24 x 24 inches
27 3/8 x 27 3/8 inches framed
AP 3/8, edition of 23
signed and numbered verso
AS6461



Milan Fog, 1980
woodcut, etching, aquatint, stitching,
collage on 3 layers of handmade paper
by Tyler Graphics
40 x 31 inches
44 5/8 x 35 inches framed
AP 7/16, edition of 46
signed and dated lower right, titled
lower left and numbered lower center
AS6445



Chicken Shit, 1974
serigraph on wire reinforced glass
(double sided)
14 x 14 inches
edition 14/20
initialed and numbered lower center
AS6440



Armie's Tough Course, 1978
intaglio with rubber stamping on
handmade paper by Joe Wilfer
22 x 20 inches
24 1/4 x 23 inches framed
PP 2/2, edition of 8
signed, dated and numbered at lower
center
AS6452



*Josh's Route (from The Raggedy
Circumnavigation Series)*, 1985
relief, serigraph, stitching, collage on
two layers of handmade paper by Tyler
Graphics
46 inches diameter
51 1/8 x 51 1/8 inches framed
AP 1/9, edition of 20
signed, dated and numbered lower
center
AS6444

IN THE WINDOW



Edna (from Dragonfly Chip Series),
1989
relief, die-cutting on handmade paper
by Tandem Press and Arches paper
24 x 24 inches
28 1/2 x 28 inches framed
edition 14/20
signed and numbered lower right
AS6459

IN THE OFFICE



Marcus (from Dragonfly Chip Series),
1989
relief, stitching on handmade paper by
Tandem Press
24 1/4 x 24 1/4 inches
28 1/8 x 28 1/8 inches framed
edition 18/24
signed and numbered lower right
AS6458

DOWNSTAIRS



Olde Tooth Dish, 1974
lithograph, serigraph, watermark on
handmade paper by Upper U.S. Paper
Mill
19 1/2 inches diameter
22 5/8 x 22 5/8 inches framed
edition 8/20
signed and dated lower right; titled and
numbered lower left
AS6448



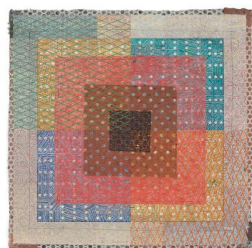
Frute Dish, 1974
serigraph, dye, vegetable printing on
handmade paper; paper by Upper U.S.
Paper Mill
19 1/2 inches diameter
22 7/8 x 22 1/2 inches
edition 5/20
signed, dated, titled and numbered
lower center
AS6449



Dish #B, 1974
serigraph, flocking, and vegetable
printing on handmade paper by Upper
U.S. Paper Mill
19 1/2 inches diameter
22 7/8 x 22 7/8 inches framed
edition 6/11
signed lower right, titled and numbered
lower left
AS6450



Treasure Rute II, 1974
relief, aquatint, linocut, silver leaf,
collage on handmade paper by HMP
Paper Mill and Kitakata Paper
24 x 18 1/2 inches
27 1/4 x 22 inches framed
TPA 1/2, edition of 11
signed and dated lower right, titled
lower left, numbered lower center
AS6466



GBY, 1989
relief and stitching on handmade paper
31 3/4 x 31 1/2 inches
36 1/8 x 36 1/8 inches framed
edition 17/30
signed, dated, titled and numbered
lower center
AS6454



Synchromesh (from the Soft and Fluffy Gears Series), 1987

relief, stitching and glue; paper by Joe Wilfer

20 1/2 x 18 3/4 inches

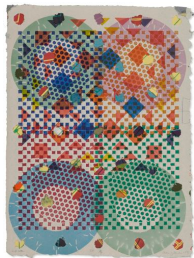
24 5/8 x 25 1/8 inches framed

edition 13/15

signed and dated lower right,

numbered lower left

AS6457



Soft Action, 1979

linocut, relief, stitching, collage on handmade paper by U.S. Paper Mill and Joe Wilfer

24 x 18 inches

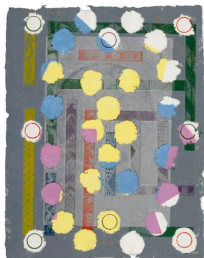
27 3/8 x 20 7/8 inches

GP 2/4, edition of 10

signed and dated lower right; titled

lower left; numbered lower center

AS6456



Alice in Grayland, 1979

serigraph, intaglio, stamping, stitching, collage, bottom sheet paper by Tyler Graphics Workshop; top sheet paper by Upper U.S. Paper Mill

23 1/2 x 19 1/2 inches

27 x 22 inches framed

AP 1/5, edition of 13

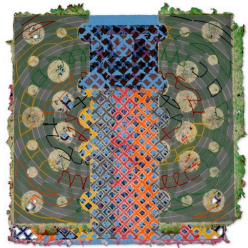
signed and dated lower right; titled

lower left; numbered lower center

AS6455



Sea City, 1978
relief embossed serigraph on Japanese
paper (double sided)
25 x 24 1/2
29 1/2 x 29 1/2 inches framed
edition 20/21
signed, dated, titled and numbered
verso
AS6451



Odd-Job, 1984
woodcut, etching, relief, stitching,
collage on three layers of handmade
paper by Tyler Graphics
42 x 42 inches
47 5/8 x 47 5/8 inches framed
AP 4/17, edition of 46
Signed, dated and titled lower right,
numbered lower center
AS5104