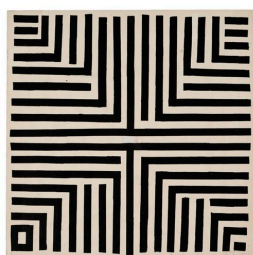


# THE DRAWING ROOM

EMILY GOLDSTEIN & VICTORIA MUNROE

**JACK YOUNGERMAN**  
**works on paper 1951 - 2012**  
**May 3 - June 3, 2013**

FRONT GALLERY:



*Pancarte*, 1951  
ink on paper  
19 3/4 x 19 3/4 inches  
22 7/8 x 22 7/8 inches framed  
JY6421



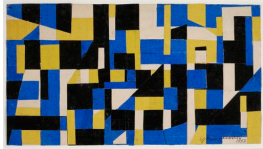
*Horizontal Verticals*, c. 1952  
gouache on paper  
7 1/2 x 10 5/8 inches  
14 x 17 inches framed  
JY6432



*Blue White Construction*, 1951  
cut paper collage  
5 5/8 x 9 1/4 inches  
13 x 15 1/2 inches framed  
JY6343



*Industrial Composition*, 1951  
cut paper collage  
4 3/4 x 8 3/4 inches  
13 7/8 x 16 3/8 inches framed  
JY6367



*Blue Construction*, 1952  
cut paper collage  
5 1/2 x 9 5/8 inches  
13 7/8 x 16 3/8 inches framed  
JY6366



*Segments/Construction*, 1952  
cut paper collage  
11 1/8 x 19 7/8 inches  
19 x 27 inches framed  
JY6354



*Broken Segments/Silver*, 1952  
cut paper and foil collage  
12 1/4 x 18 1/4 inches  
19 1/4 x 25 5/8 inches framed  
JY6348



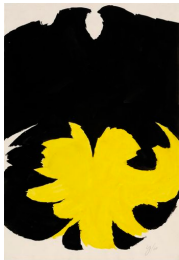
*Blackdom*, 1956  
ink and pencil on paper  
15 1/4 x 5 5/8 inches  
21 7/8 x 12 inches framed  
JY6415



*Allblack*, 1957  
gouache on paper  
20 5/8 x 11 1/2 inches  
28 x 18 1/2 inches framed  
JY6350



*Blue Delfina*, 1961  
gouache on paper  
21 1/2 x 20 1/2 inches  
24 3/4 x 23 1/2 inches framed  
JY6349



*Yellow/Black*, 1960  
watercolor on paper  
18 x 12 inches  
21 1/8 x 15 1/4 inches  
JY6346



*Untitled*, 1965  
India ink on paper  
29 x 23 1/2 inches  
JY6374



*August 31, 1966*  
India ink on paper  
23 x 29 inches  
25 7/8 x 31 7/8 inches framed  
JY6344



*Untitled, 1965*  
India ink on paper  
29 x 23 inches  
32 x 25 7/8 inches framed  
JY6369



*Untitled, 1965*  
India ink and gouache on paper  
23 x 29 inches  
25 3/4 x 31 3/4 inches framed  
JY6368



*Cutting, 1954*  
ink and collage on paper  
20 5/8 x 11 1/2 inches  
20 x 15 1/2 inches matted  
JY6427



*Red/White, 1957*  
gouache on paper  
7 1/4 x 4 1/2 inches  
JY6342



*Black/White Cut Paper, 1957*  
gouache on paper  
4 3/4 x 4 7/8 inches  
12 x 10 inches matted  
JY5795



*Blue Vertical, 1957*  
gouache and ink on paper  
5 5/8 x 3 inches  
10 x 8 inches matted  
JY6394



*Orange/Black/Creme, 1957*  
gouache, ink and pieced paper  
5 1/2 x 6 1/2 inches  
12 1/4 x 13 inches matted  
JY6407



*Pale Blue/Black, 1959*  
gouache on paper  
5 3/4 x 4 3/8 inches  
10 x 8 inches matted  
JY6392



*Navy Blue/Blue*, 1965  
gouache on paper  
7 x 7 1/4 inches  
13 1/4 x 13 3/8 inches matted  
JY6411



*Thicket*, 1954  
gouache and ink on paper  
4 1/2 x 5 inches  
10 1/4 x 10 3/8 inches matted  
JY6403



*Cluster*, 1956  
gouache on pieced paper  
5 3/8 x 5 1/2 inches  
12 x 10 inches matted  
JY5789



*Yellow/Black*, 1958  
gouache on paper  
5 1/8 x 5 1/8 inches  
12 x 10 inches matted  
JY5794



*Yellow/Black/Green, 1962*  
gouache on paper  
11 3/8 x 8 3/4 inches  
18 1/2 x 15 3/4 inches matted  
JY6429

FRONT WINDOW:



*Green/Orange/Blue, 2010*  
gouache on handmade Japanese paper  
13 x 11 5/8 inches  
14 7/8 x 13 3/4 inches framed  
JY6272



*Untitled, 1964*  
India ink on paper  
23 x 28 1/2 inches  
26 x 32 inches framed  
JY6431

OFFICE:



*July 2, 1972*  
Dr. Martin's watercolor on paper  
23 x 29 inches  
24 7/8 x 30 7/8 inches framed  
JY6345

HALLWAY:



*Soft Composition*, 1953  
oil on paper  
4 7/8 x 4 1/8 inches  
11 1/2 x 10 1/2 inches framed  
JY6341



*La Combe*, 1953  
oil on paper  
7 5/8 x 7 1/2 inches  
14 1/8 x 14 inches framed  
JY6340



*Red/Yellow (Indigo Close)*, 1972  
acrylic on pieced paper  
7 1/2 x 5 5/8 inches  
13 1/4 x 11 inches matted  
JY5793



*Blues/Black*, 1956 - 2006  
gouache and ink on paper  
4 5/8 x 4 1/2 inches  
10 x 8 inches matted  
JY6402





*Edge Yellow II*, 1964  
gouache and pencil on paper  
4 3/4 x 3 1/2 inches  
10 1/2 x 9 inches matted  
JY6397



*White Up*, 1971  
acrylic on paper  
4 1/2 x 4 3/8 inches  
12 x 10 inches matted  
JY6401



*Red Corner II*, 1963  
gouache on paper  
4 1/2 x 4 inches  
10 x 8 inches matted  
JY6400



*Red Corner*, 1963  
gouache on paper  
4 1/2 x 4 inches  
10 x 8 inches matted  
JY6399



*Confront*, 1969  
gouache on paper  
7 1/8 x 5 1/8 inches  
12 x 10 inches matted  
JY6395

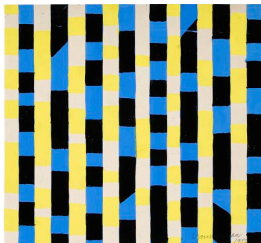


*Mixing*, 1960  
gouache on paper  
4 5/8 x 4 3/4 inches  
10 x 8 inches matted  
JY6404

ALCOVE:



*Tree*, 1951  
gouache and ink on paper  
11 x 15 1/8 inches  
17 3/4 x 21 3/4 inches framed  
JY6430



*Yellow/Black*, 1952  
gouache on paper  
7 x 7 1/2 inches  
13 5/8 x 13 7/8 inches framed  
JY6355



*Soft Segments/Greens*, 1954  
gouache on paper  
6 7/8 x 3 1/2 inches  
13 1/4 x 9 7/8 inches framed  
JY6419

BACK GALLERY:



*Yellow/Red*, 2012  
gouache on handmade Japanese paper  
14 1/8 x 12 1/4 inches  
16 1/4 x 14 1/4 inches framed  
JY6275



*White/Yellow/Black*, 2012  
gouache on handmade Japanese paper  
14 x 12 1/4 inches  
16 1/4 x 14 1/4 inches framed  
JY6276



*Greenlet (study)*, 2008-10  
gouache on handmade Japanese paper  
11 x 11 3/8 inches  
13 x 13 1/2 inches framed  
JY6363



*Orange/Blue*, 2010  
gouache on paper  
12 3/8 x 13 1/4 inches  
14 1/2 x 15 inches framed  
JY6433



*Blue Triangle*, 2011  
gouache on handmade Japanese paper  
9 x 10 inches  
11 x 12 1/4 inches framed  
JY6362



*Crucifer (study)*, 2008  
gouache on paper  
14 1/2 x 14 1/8 inches  
16 1/4 x 16 inches framed  
JY6428



*Suspensus Square*, 2010  
gouache on paper  
15 1/2 x 14 5/8 inches  
16 7/8 x 16 inches framed  
JY6357



*In Black*, 2010  
gouache on paper  
13 7/8 x 13 1/2 inches  
16 x 16 1/4 inches framed  
JY6353